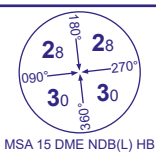
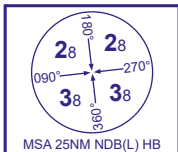
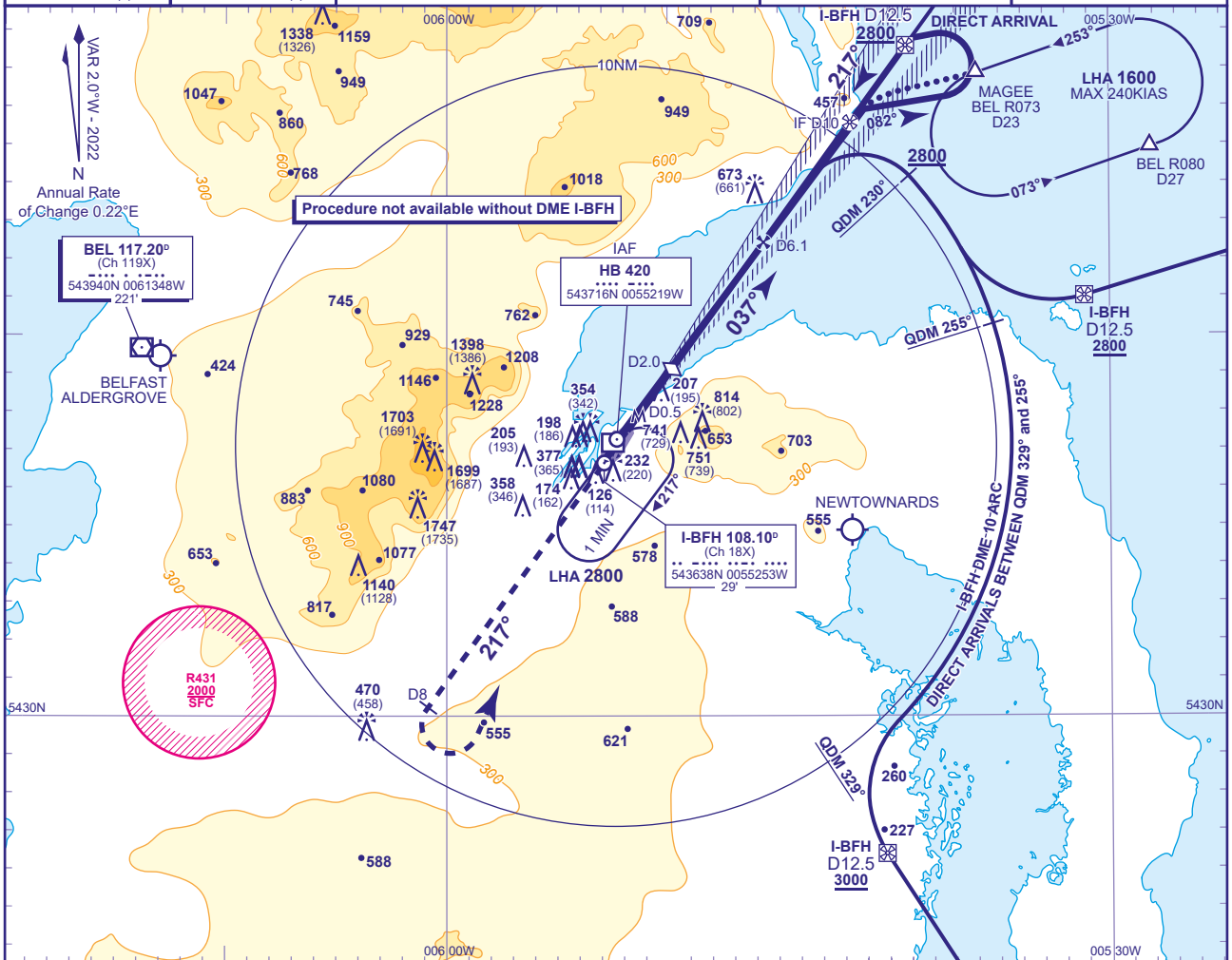


INSTRUMENT APPROACH CHART - ICAO

BELFAST CITY
LOC/DME/NDB(L)
RWY 22
(ACFT CAT A,B,C)

APP 130.850	BELFAST APPROACH	AD ELEVATION 15
TWR 122.830	BELFAST TOWER	THR ELEVATION 12
RAD 134.800	BELFAST RADAR	OBSTACLE ELEVATION 1744 AMSL (1732) (ABOVE THR)
ATIS 124.580	BELFAST INFORMATION	
BEARINGS ARE MAGNETIC		TRANSITION ALTITUDE 6000

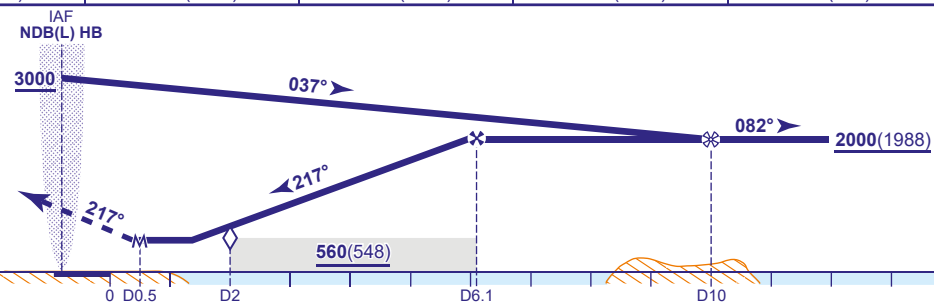


RECOMMENDED PROFILE Gradient 5.24%, 320FT/NM

DME I-BFH	6	5	4	3	2 (SDF)
ALT(HGT)	1990(1978)	1670(1658)	1350(1338)	1030(1018)	720(708)

MAPt I-BFH DME 0.5

Climb straight ahead to 3000 or I-BFH DME 8 whichever is the earlier then turn left to return to NDB(L) HB to enter the hold at 3000 or as directed.



Aircraft Category		A	B	C	Rate of descent	G/S KT				
OCA (OCH)	Procedure	500(488)	500(488)	500(488)		160	140	120	100	80
VM(C)OCA (OCH AAL)		1040(1025)	1120(1105)	1800(1785)	FT/MIN					
Southeast of RWY 04/22		1040(1025)	1120(1105)	1230(1215)						

NOTE Direct arrivals available on request to ATC.

CHANGE (5/24): OCA(OCH) MINIMA REVISED.